

UBTECH

uKit Explore



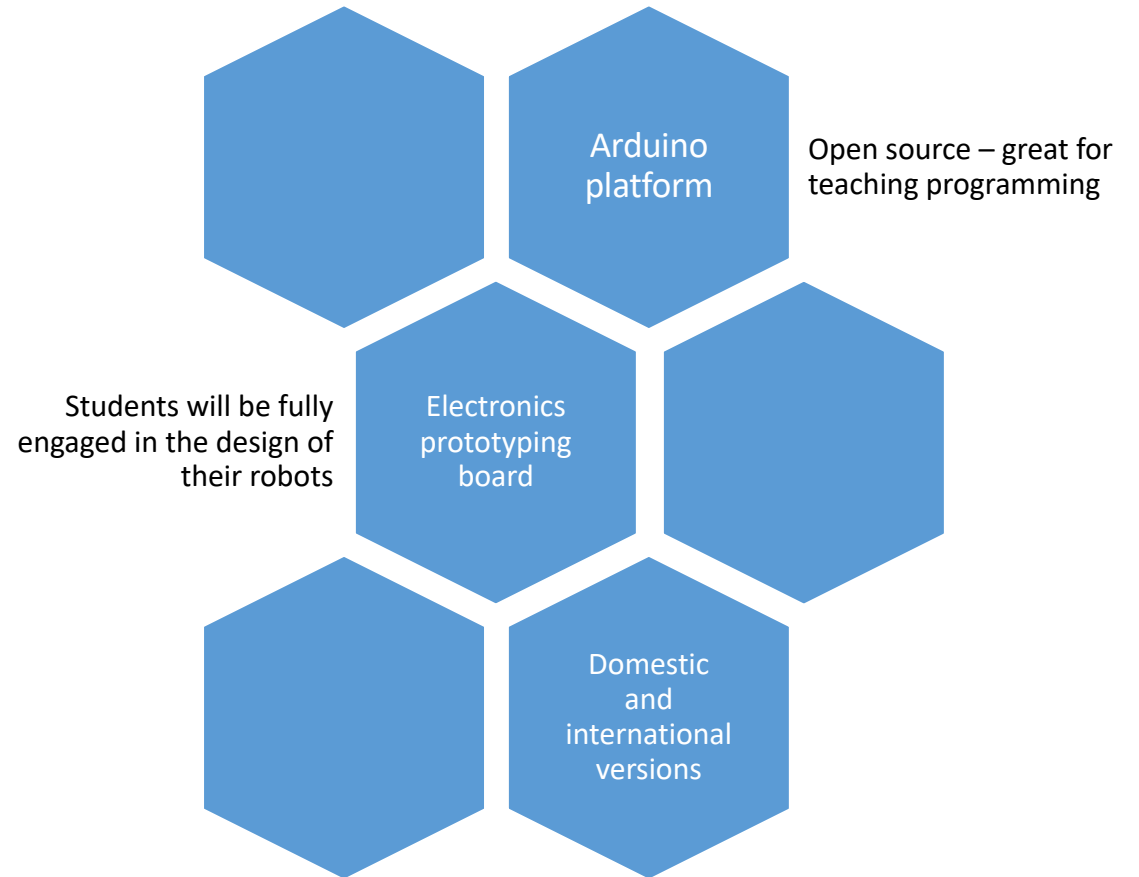


01

Genel Bakış

UBTECH EDUCATION

uKit Explore



02

Ürün Özellikleri

UBTECH EDUCATION

Ürün Özellikleri

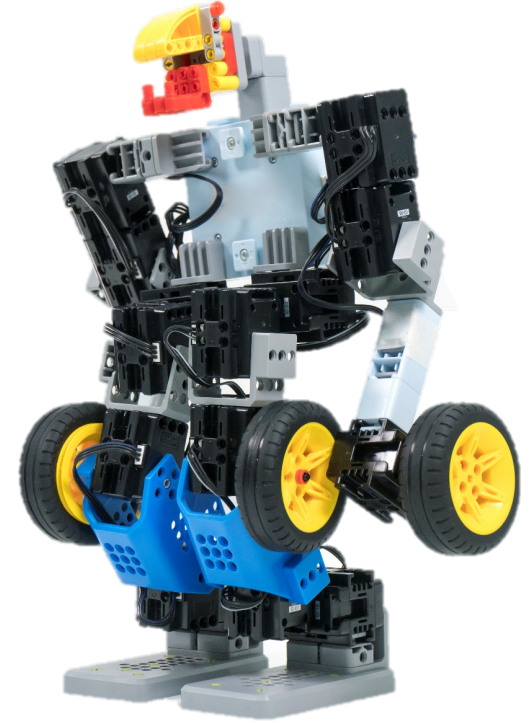
uKit Explore Arduino ile tamamen uyumludur.



**uKit全面兼容
Arduino**

Ürün Özellikleri

- Arduino açık kaynak platformu kullanarak zengin kaynaklara erişim;
- Zengin genişletme arayüzü birden fazla sensör modülünü ve ilgili çevresel erişimi destekler;
- Zengin bağımsız sensör modül tasarımı;
- uKit Explore yapısal parça modülü özellikleri ile uyumlu olan uKit ürünleri birbirini tamamlar;
- Farklı seviyelerde kullanıcıların ihtiyaçlarını karşılamak için C / C++ / Block tabanlı programlamayı destekler;



Ürün Özellikleri



60+ Saat Ders İçeriği



600+ Komponent ve Parça



16 Servo Motor



4 Sensör



Bluetooth Hoparlör



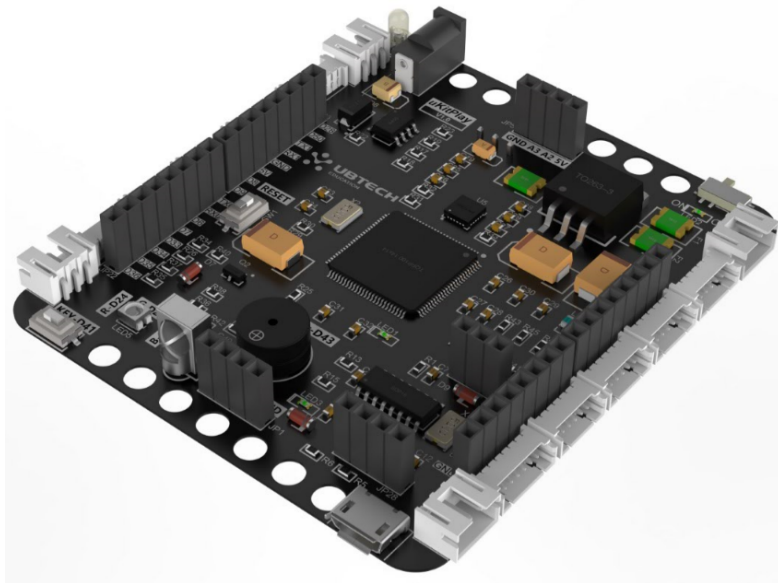
LED Lamba (LED Eye)



34+ Resmi Model

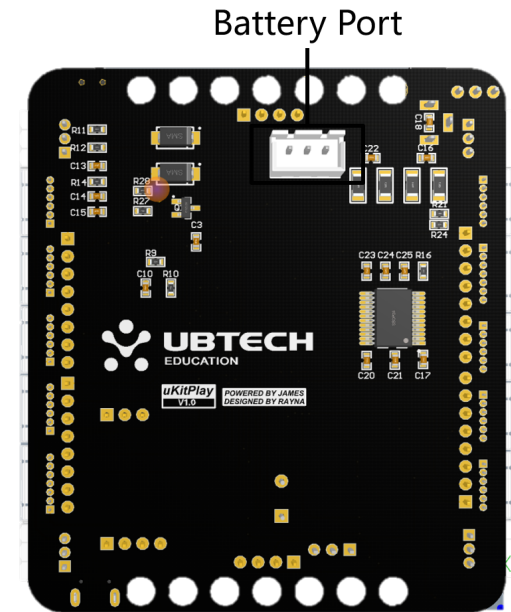
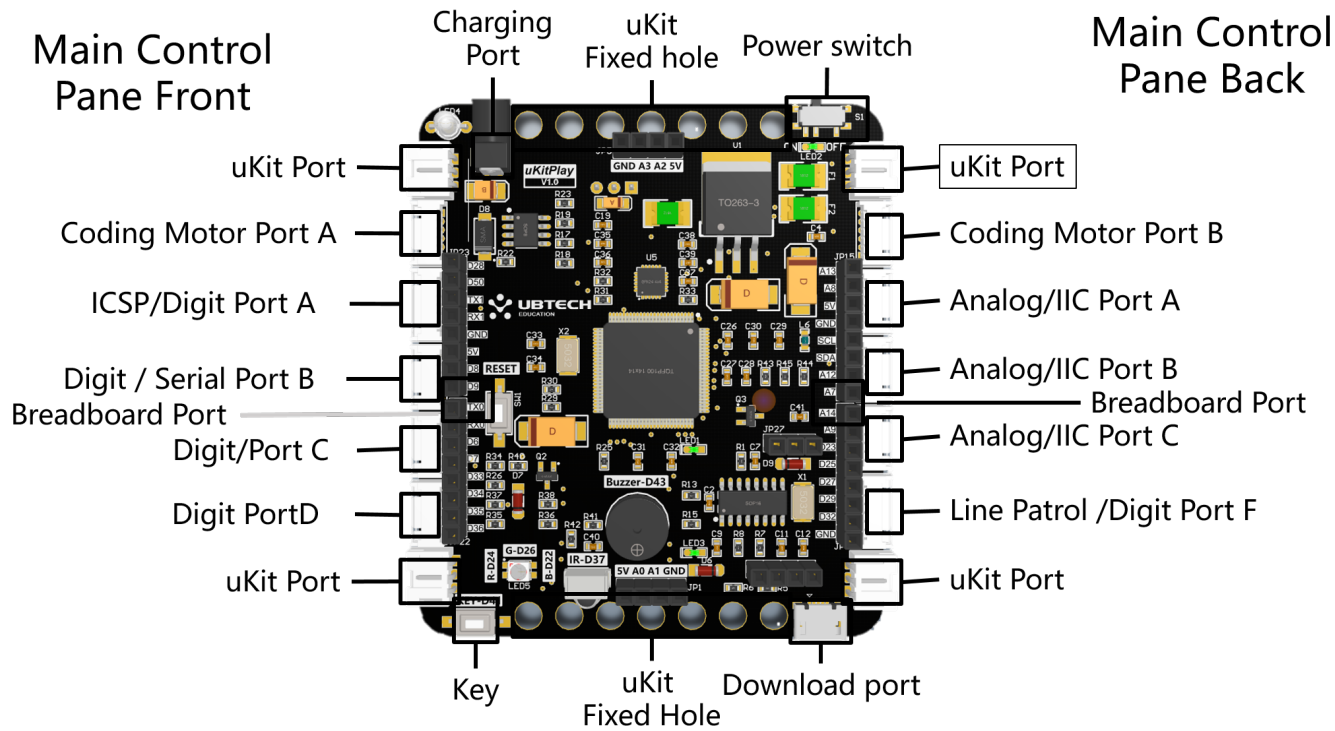


Main board



Configuration	Specifications
CPU	ATMEGA2560-16AU
Buzzer	5Vdc Power
LED	Programmable RGB
Key	Power、 Reset
Electronic compass	MPU6050
Protect the circuit	SCP, OCP, OVP, OTP
Debugging	TX0、 RX0、 TX1、 RX1
Interface	I2C、 SPI、 UART、 ADC、 GPIO、 PWM、 Fixed hole
Power	7.2~12V
Size	78×66×15mm
Compiler	Arduino IDE
Programming language	C/C++/Blockly

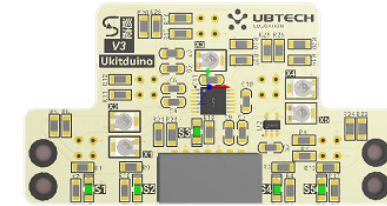
Main board



Sensörler


◆ Sensör Modülleri.


1	Dokunma Sensörü
2	Kızılötesi Sensör
3	Ultrasonic Sensör
4	Çizgi İzleme Sensörü
5	LED Işık




Yapısal Parçalar & Servo

◆ Support uKit general module & servo.

Motor	
Working Voltage	5-7.6V
No-Load Speed	14800r/min
No-Load Current	30mA
Rated Speed	12000r/min
Rated Torque	2.5g/cm
Output Power	0.13W
Diagram:	

Servo	
Working Voltage	7.4V
No-Load Speed	14800r/min
No-Load Current	60mA
Rated Speed	10000r/min
Rated Torque	4g/cm
Output Power	0.13W
Diagram:	

uKit structural parts	
Connectors	15 types
Character Parts	18 types
Fasteners	6 types
Connecting Cables	4 types
Main Control Box	1 type
Sensors	4 types
Diagram:	



03

Yazılım

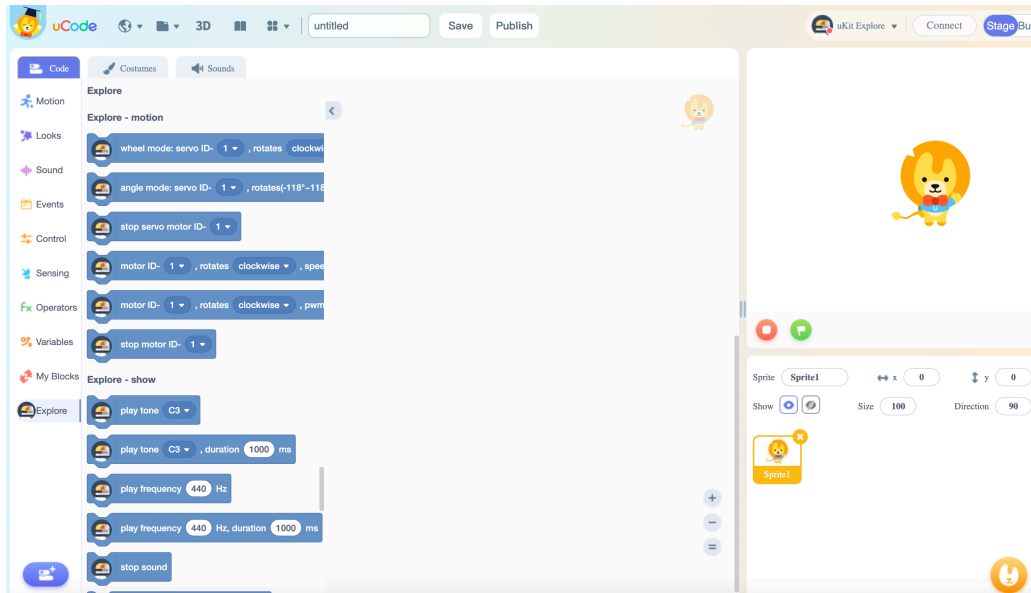
UBTECH EDUCATION

Programlama Araçları

- ◆ Farklı düzeylerde kullanıcıların ihtiyaçlarını karşılamak için C / C ++ / Blok programlama destekler.



uCode



Arduino IDE

