

UNSHIELDED SMD POWER INDUCTORS / FPI TYPE

FEATURES

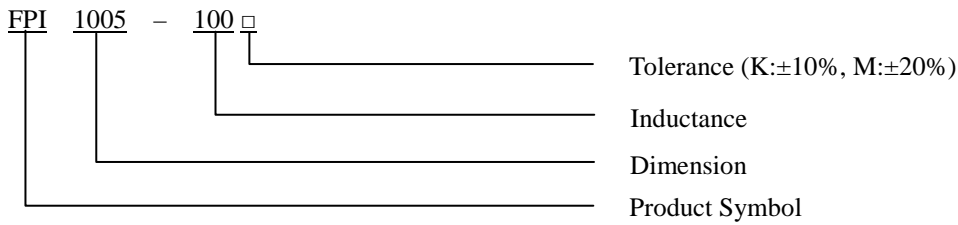
- ◆ Silver Plated Type
- ◆ High power and high saturation
- ◆ Ideal inductors for DC/DC conversion



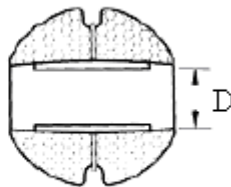
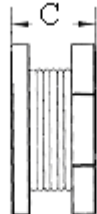
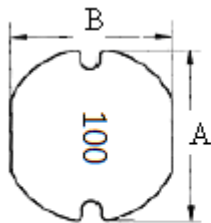
APPLICATIONS

- ◆ LCD TV
- ◆ DC/DC converter
- ◆ Digital camera
- ◆ Portable communication equipment

ORDERING CODE



DIMENSIONS (UNIT: mm)



A	10.0 ± 0.4	m/m
B	9.0 ± 0.4	m/m
C	5.4 ± 0.3	m/m
D	3.1 (REF)	m/m



CORE MASTER ENTERPRISE CO., LTD.

<http://www.coremaster.com.tw>

UNSHIELDED SMD POWER INDUCTORS / FPI TYPE

ELECTRICAL CHARACTERISTICS FOR FPI1005

Part No.	Inductance (uH)	RDC (Ω)	IDC (A)
FPI1005-R82 □	0.82	0.015	17.00
FPI1005-0R5 □	0.50	0.015	16.50
FPI1005-1R0 □	1.00	0.020	16.00
FPI1005-1R5 □	1.50	0.020	12.30
FPI1005-2R2 □	2.20	0.020	10.20
FPI1005-3R3 □	3.30	0.031	8.00
FPI1005-3R9 □	3.90	0.032	7.50
FPI1005-4R7 □	4.70	0.033	6.30
FPI1005-5R0 □	5.00	0.033	6.30
FPI1005-5R6 □	5.60	0.034	5.90
FPI1005-6R8 □	6.80	0.038	5.50
FPI1005-8R2 □	8.20	0.040	5.20
FPI1005-100 □	10	0.060	5.00
FPI1005-150 □	15	0.080	4.00
FPI1005-180 □	18	0.090	3.40
FPI1005-220 □	22	0.100	3.00
FPI1005-330 □	33	0.120	2.80
FPI1005-390 □	39	0.150	2.30
FPI1005-470 □	47	0.170	2.20
FPI1005-560 □	56	0.190	2.00
FPI1005-680 □	68	0.220	1.73
FPI1005-820 □	82	0.250	1.70
FPI1005-101 □	100	0.300	1.60
FPI1005-121 □	120	0.400	1.55
FPI1005-151 □	150	0.470	1.45
FPI1005-181 □	180	0.630	1.35
FPI1005-221 □	220	0.730	1.00
FPI1005-301 □	300	0.800	1.00
FPI1005-331 □	330	1.150	0.68
FPI1005-471 □	470	1.480	0.57
FPI1005-561 □	560	1.500	0.53
FPI1005-681 □	680	1.600	0.50
FPI1005-821 □	820	2.000	0.38
FPI1005-102 □	1000	3.800	0.20

* 100uH 以上 Test Frequency : 1KHZ/1V

* 100uH 以下 Test Frequency : 2.52MHZ/1V



CORE MASTER ENTERPRISE CO., LTD.

<http://www.coremaster.com.tw>