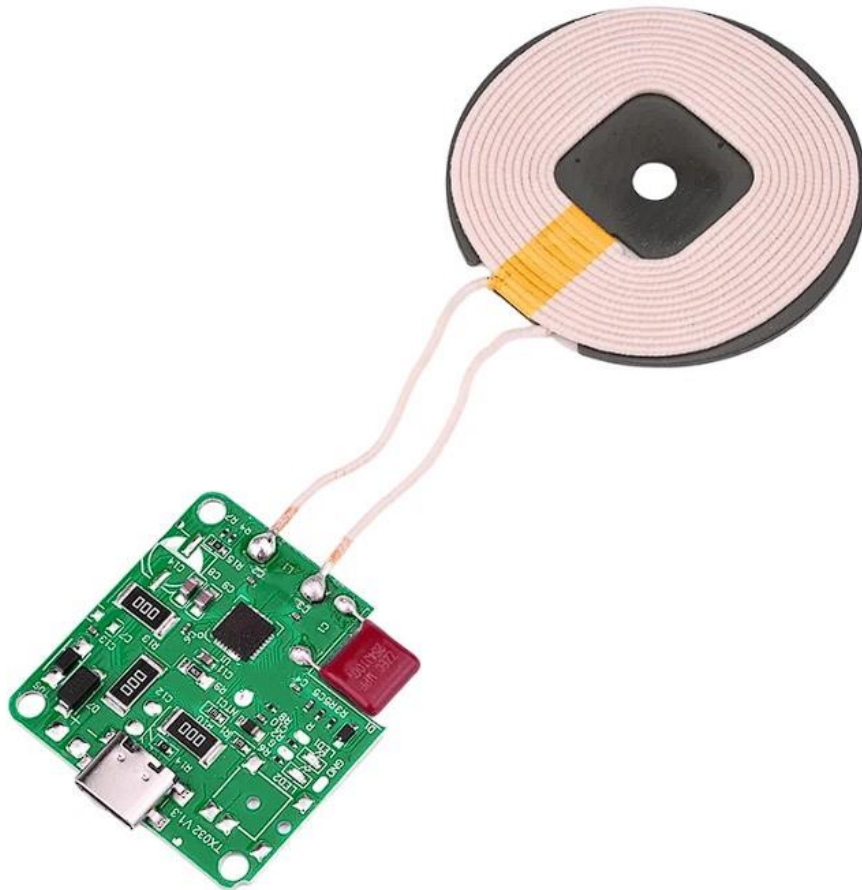


# 15W 12V high power 10mm long distance mobile phone wireless charging module TX032 V1.3



## Description



IC module

### Features:

1. The use of high-quality material quality assurance
2. 10MM intermittent charging, stable performance 15W fast charging
3. Exquisite workmanship, beautiful appearance, neatly arranged components
4. The product has a charging indicator, standby indicates red light, charging indicates green light
5. Wide range of applications, customers can make their own wireless charging DIY modification

### Parameter:

Input voltage: DC5V/9V/12V (recommended 9V/12V input, high charging efficiency)

Output power: 15W downward compatible charging distance: 0-10mm

Product certification: CE/FCC/ROHS

Governing standard: Qi wireless charging standard

### Warm tips:

Fast charging labeling appears a few seconds after the normal phenomenon disappears, the phone is still in the fast charging state;

Wireless charging = transmitter + receiver

- 1, the phone has wireless charging function: if the phone does not come with wireless charging function, the transmission end can directly shoot wireless charging
- 2, the phone does not have wireless charging function: if the phone does not come with wireless charging function, use the receiver end to realize wireless charging and you need to pull the transmitting tip at the same time

Package include:

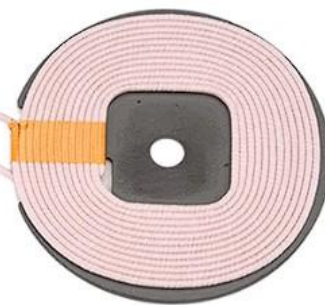
15W wireless charging module \*1



# Wiring Method

Wiring method two:  
Positive and negative soldering points 5V/9V/12V input  
Power supply available from adapter or DC power supply

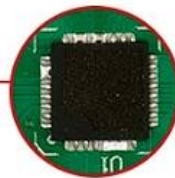
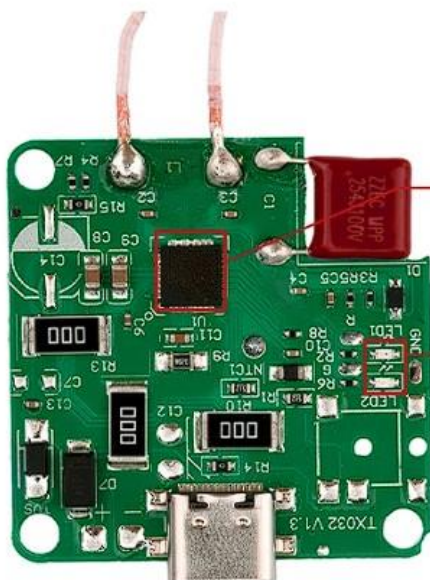
Anodal pole  
Negative pole



Wiring method one:  
Type-C input port  
5V/9V/12V voltage input, can be used for cell phone  
Charger or QC3.0 charging head power supply

Remarks: 5V input, 5W output.  
9V/12V input is recommended  
for high charging efficiency.

# Detailed description



**Driver chip for wireless charging**

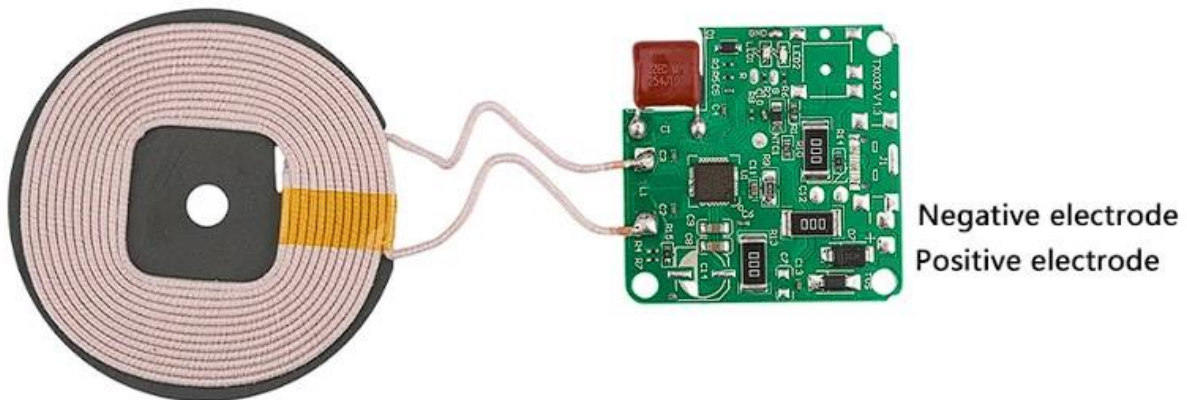
Maintains full low-temperature fast charging and uninterrupted charging

**Indicator light symbols**

- Power on: green light - red light blinks 3 times at the same time and then the red light is always on
- Charging: Green light is always on

# Wiring Method

Wiring method one:  
Positive and negative solder joints 5V/9V/12V input  
Adapter or DC power supply available



Remarks: 5V input, 5W output.  
9V/12V input is recommended for high charging efficiency.

