

UNSHIELDED SMD POWER INDUCTORS / FPI TYPE

FEATURES

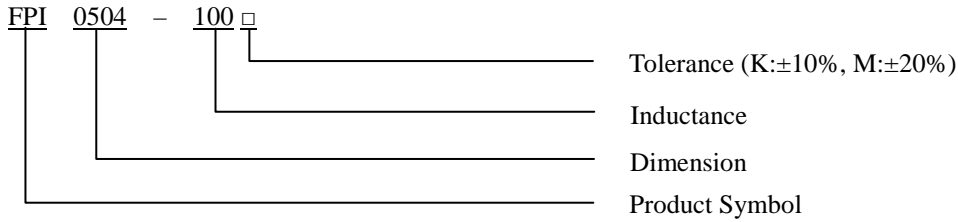
- ◆ Silver Plated Type
- ◆ High power and high saturation
- ◆ Ideal inductors for DC/DC conversion



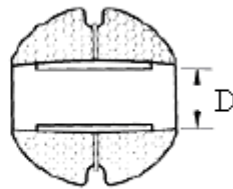
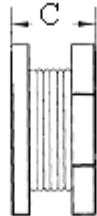
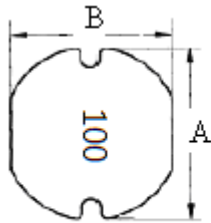
APPLICATIONS

- ◆ LCD TV
- ◆ DC/DC converter
- ◆ Digital camera
- ◆ Portable communication equipment

ORDERING CODE



DIMENSIONS (UNIT: mm)



A	5.8 ± 0.3	m/m
B	5.2 ± 0.3	m/m
C	4.5 ± 0.3	m/m
D	1.3 (REF)	m/m



CORE MASTER ENTERPRISE CO., LTD.

<http://www.coremaster.com.tw>

UNSHIELDED SMD POWER INDUCTORS / FPI TYPE

ELECTRICAL CHARACTERISTICS FOR FPI0504

Part No.	Inductance (uH)	RDC (Ω)	IDC (A)
FPI0504-R47 □	0.47	0.010	10.00
FPI0504-R60 □	0.60	0.013	9.00
FPI0504-R90 □	0.90	0.018	7.80
FPI0504-1R0 □	1.00	0.020	7.70
FPI0504-1R2 □	1.20	0.025	6.50
FPI0504-1R5 □	1.50	0.025	6.00
FPI0504-1R7 □	1.70	0.025	6.00
FPI0504-2R0 □	2.00	0.030	5.50
FPI0504-2R2 □	2.20	0.035	5.20
FPI0504-2R5 □	2.50	0.040	5.10
FPI0504-2R6 □	2.60	0.043	5.00
FPI0504-2R7 □	2.70	0.045	5.00
FPI0504-3R3 □	3.30	0.045	4.20
FPI0504-3R6 □	3.60	0.055	4.10
FPI0504-3R9 □	3.90	0.055	4.00
FPI0504-4R7 □	4.70	0.060	3.00
FPI0504-5R0 □	5.00	0.060	3.00
FPI0504-5R6 □	5.60	0.065	2.90
FPI0504-6R8 □	6.80	0.065	2.70
FPI0504-8R2 □	8.20	0.070	2.50
FPI0504-100 □	10	0.100	2.30
FPI0504-120 □	12	0.120	2.20
FPI0504-150 □	15	0.140	2.10
FPI0504-180 □	18	0.150	2.00
FPI0504-220 □	22	0.180	1.40
FPI0504-270 □	27	0.200	1.40
FPI0504-330 □	33	0.230	1.20
FPI0504-390 □	39	0.300	1.00
FPI0504-470 □	47	0.310	1.00
FPI0504-500 □	50	0.350	0.90
FPI0504-560 □	56	0.420	0.85
FPI0504-680 □	68	0.460	0.80



CORE MASTER ENTERPRISE CO., LTD.

<http://www.coremaster.com.tw>

UNSHIELDED SMD POWER INDUCTORS / FPI TYPE

ELECTRICAL CHARACTERISTICS FOR FPI0504

Part No.	Inductance (uH)	RDC (Ω)	IDC (A)
FPI0504-820 □	82	0.600	0.77
FPI0504-101 □	100	0.700	0.70
FPI0504-121 □	120	0.930	0.65
FPI0504-151 □	150	1.100	0.58
FPI0504-181 □	180	1.350	0.55
FPI0504-221 □	220	1.570	0.50
FPI0504-271 □	270	1.850	0.40
FPI0504-301 □	300	1.900	0.40
FPI0504-331 □	330	2.000	0.40
FPI0504-391 □	390	2.200	0.40
FPI0504-471 □	470	3.000	0.40
FPI0504-561 □	560	3.000	0.35
FPI0504-681 □	680	4.000	0.33
FPI0504-821 □	820	4.400	0.30
FPI0504-102 □	1000	5.000	0.28

* 100uH 以上 Test Frequency : 1KHZ/1V

* 100uH 以下 Test Frequency : 2.52MHZ/1V



CORE MASTER ENTERPRISE CO., LTD.

<http://www.coremaster.com.tw>