

UNSHIELDED SMD POWER INDUCTORS / FPI TYPE

FEATURES

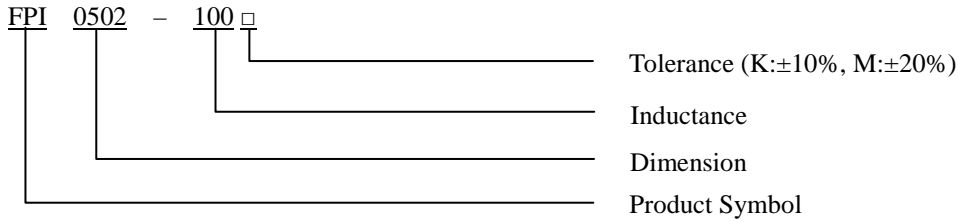
- ◆ Silver Plated Type
- ◆ High power and high saturation
- ◆ Ideal inductors for DC/DC conversion



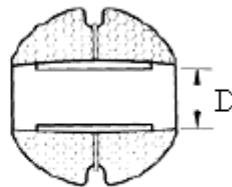
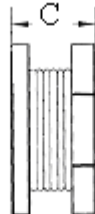
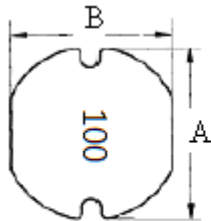
APPLICATIONS

- ◆ LCD TV
- ◆ DC/DC converter
- ◆ Digital camera
- ◆ Portable communication equipment

ORDERING CODE



DIMENSIONS (UNIT: mm)



A	5.8 ± 0.3	m/m
B	5.2 ± 0.3	m/m
C	2.5 ± 0.3	m/m
D	1.3 (REF)	m/m



CORE MASTER ENTERPRISE CO., LTD.

<http://www.coremaster.com.tw>

UNSHIELDED SMD POWER INDUCTORS / FPI TYPE

ELECTRICAL CHARACTERISTICS FOR FPI0502

Part No.	Inductance (uH)	RDC (Ω)	IDC (A)
FPI0502-1R5 □	1.5	0.048	5.50
FPI0502-2R2 □	2.2	0.060	5.00
FPI0502-3R3 □	3.3	0.070	3.60
FPI0502-4R7 □	4.7	0.075	2.80
FPI0502-5R6 □	5.6	0.150	2.70
FPI0502-6R8 □	6.8	0.160	2.50
FPI0502-100 □	10	0.180	2.10
FPI0502-150 □	15	0.220	1.90
FPI0502-220 □	22	0.390	1.25
FPI0502-330 □	33	0.430	1.05
FPI0502-470 □	47	0.720	1.00
FPI0502-560 □	56	0.800	0.75
FPI0502-680 □	68	1.000	0.70
FPI0502-820 □	82	1.200	0.70
FPI0502-101 □	100	1.300	0.68
FPI0502-151 □	150	1.810	0.55
FPI0502-221 □	220	3.500	0.46
FPI0502-301 □	300	4.000	0.38
FPI0502-471 □	470	5.000	0.35

* 100uH 以上 Test Frequency : 1KHZ/1V

* 100uH 以下 Test Frequency : 2.52MHZ/1V



CORE MASTER ENTERPRISE CO., LTD.

<http://www.coremaster.com.tw>