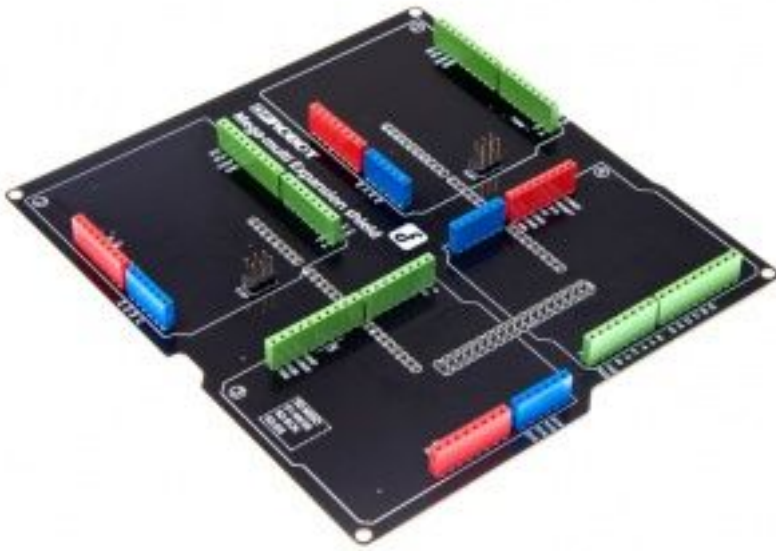




Arduino Mega - Arduino Due Çoklu IO Genişletme Kartı - DFRobot



Mega Multi - Expansion shield

Contents

[hide]

- [1 Introduction](#)
- [2 Specification](#)
- [3 Pinout](#)
- [4 Application](#)

Introduction

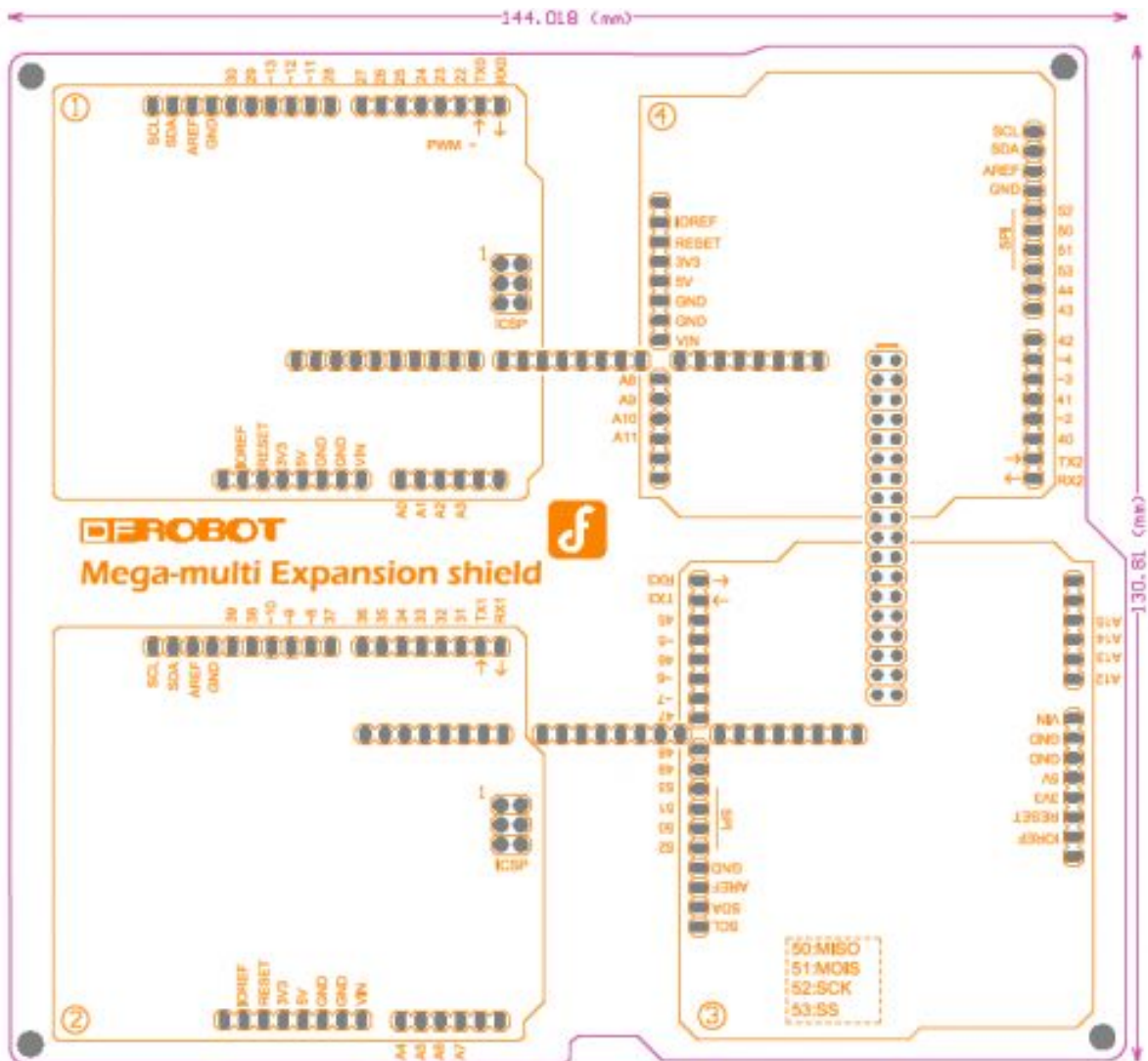
Bothered with the conflict of I/O pins when using shields with the Mega board during a project? Find it hard to take good advantage of the mega I/O pins? Try the Mega I/O multi-expansion shield to help solving the problem.

Mega I/O multi-expansion shield means that you can plug 4 different shields at same time. All I/O pins of the Mega board are expanded so that you can plug 4 shields at most, and worry not any more about the I/O conflict. Whatsmore, it makes your project clean & tidy with the cables be arranged in order . Expand your project idea with Mega I/O multi-expansion shield

Specification

- Compatible with Mega1280/2560/ADK
- Support 4 shields
- Size:14.4x13cm

Pinout



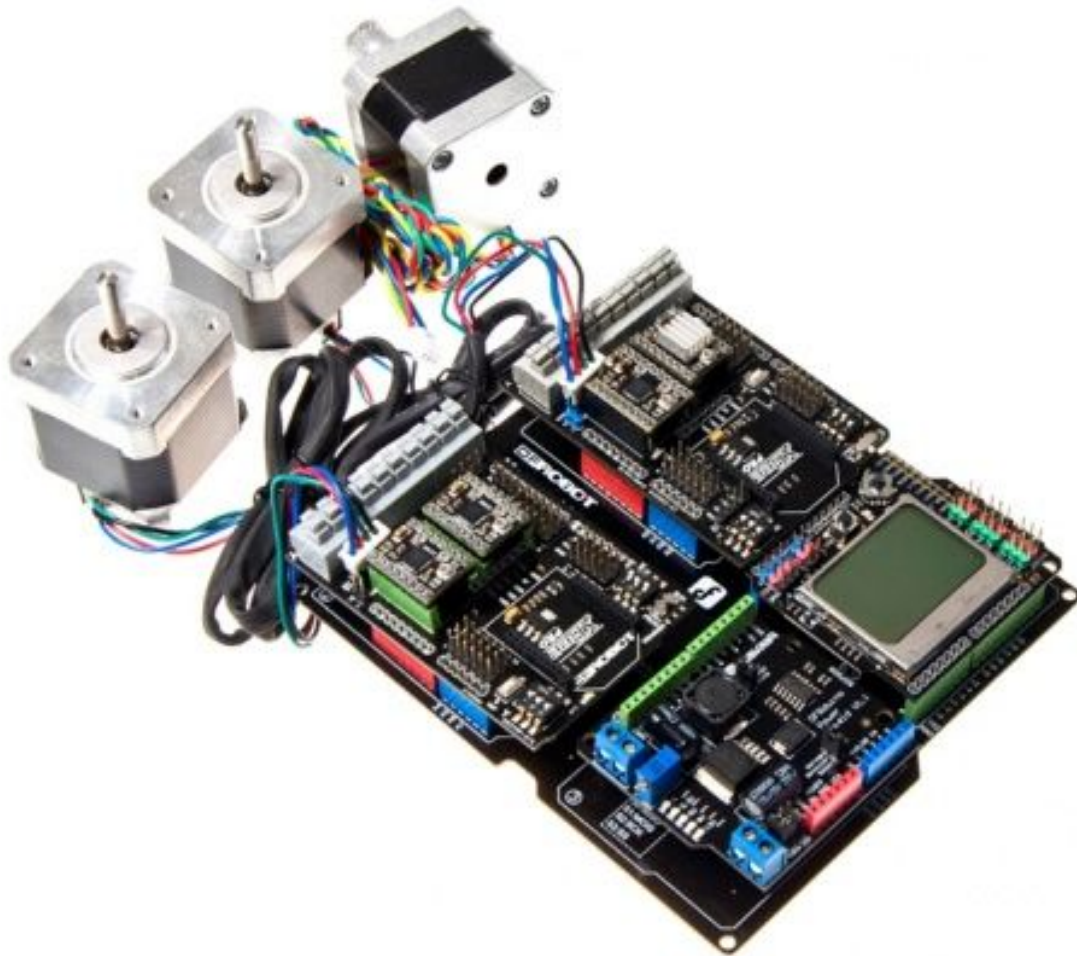
Pinout

Application

Here is some example for reference

A drafting instrument or a 3D printer

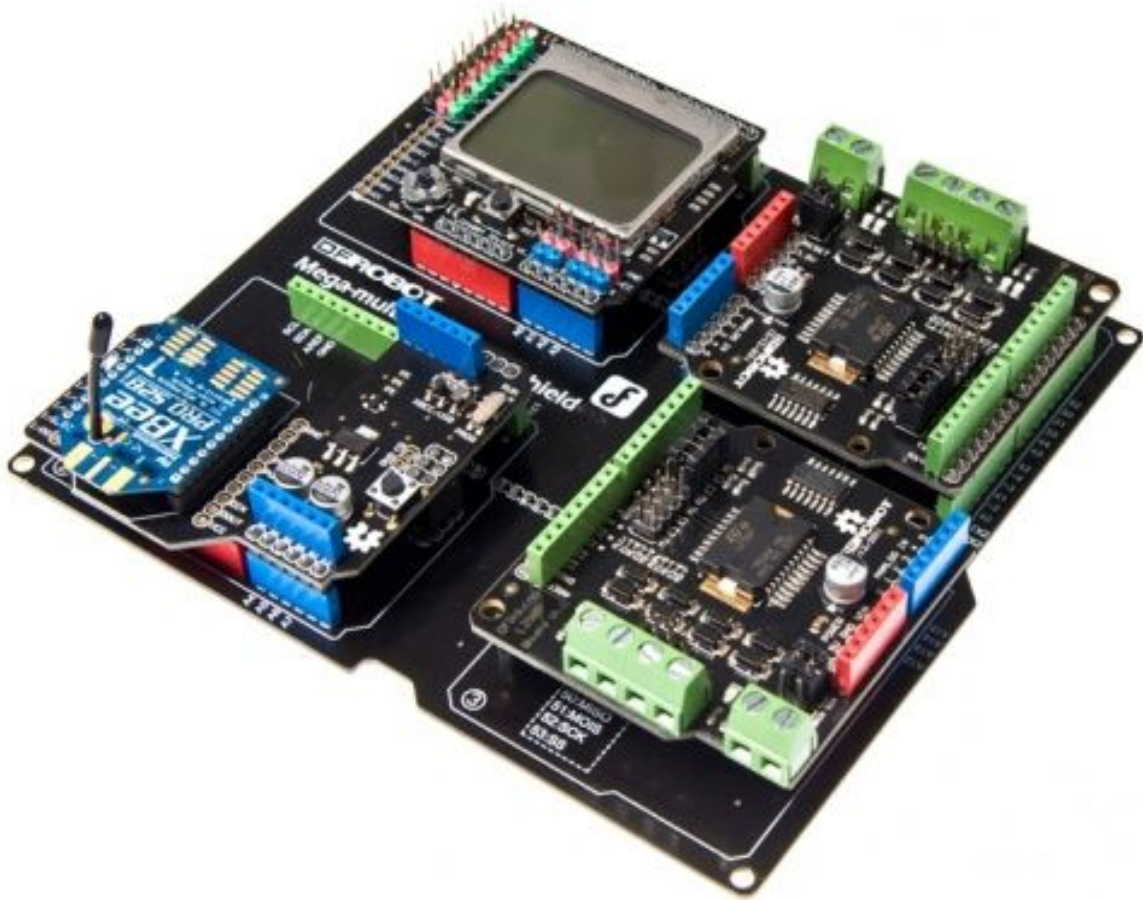
1. [A mega board \(1280/2560/ADK\)](#)
2. [Dual Bipolar Stepper Motor Shield for Arduino \(A4988\)](#)
3. [LCD12864 Shield for Arduino](#)
4. [A Power Shield \(Arduino Compatible\)](#)
5. [A mega multi-expansion shield](#)



A drafting instrument or a 3D printer

A 4WD robotic platform

1. [A mega board \(1280/2560/ADK\)](#)
2. [2A Motor Shield For Arduino x2](#)
3. [A Graphic LCD4884 Shield For Arduino](#)
4. [A Xbee Shield For Arduino](#)
5. [A mega multi-expansion shield](#)



A 4WD robotic platform

A simple smart home care robot

1. [A mega board \(1280/2560/ADK\)](#)
2. [A LCD Keypad Shield For Arduino](#)
3. [DFRduino Ethernet Shield \(Support Mega and Micro SD\)](#)
4. [A Relay Shield for Arduino](#)
5. [A mega multi-expansion shield](#)
6. [A light sensor and a humidity & temperature sensor](#)

