

Kapasitif Dijital Arduino Dokunmatik Sensör



[DFRobot Capacitive Touch Sensor](#)

Contents

[hide]

- [1 Introduction](#)
- [2 Improvement List](#)
- [3 Specification](#)
- [4 Tutorial](#)
 - [4.1 Connection Diagram](#)
 - [4.2 Sample Code](#)
 - [4.3 Result](#)
- [5 Trouble shooting](#)
- [6 More](#)

Introduction

Are you tired with clicking mechanic button? Try our capacitive touch sensor. Right now we can find touch sensor on most electronic device. So upgrade your Arduino project with our new version touch sensor and make it cool!!

This little sensor can "feel" people and metal touch and feedback a high/low voltage level. Even isolated by some cloth and paper, it still can feel the touch. And the sensitivity will decrease as isolation get thick. For detail of usage, please check our wiki. To extreme user experience of our sensor module, we made following improvement. We can feel our care for customers.

Improvement List

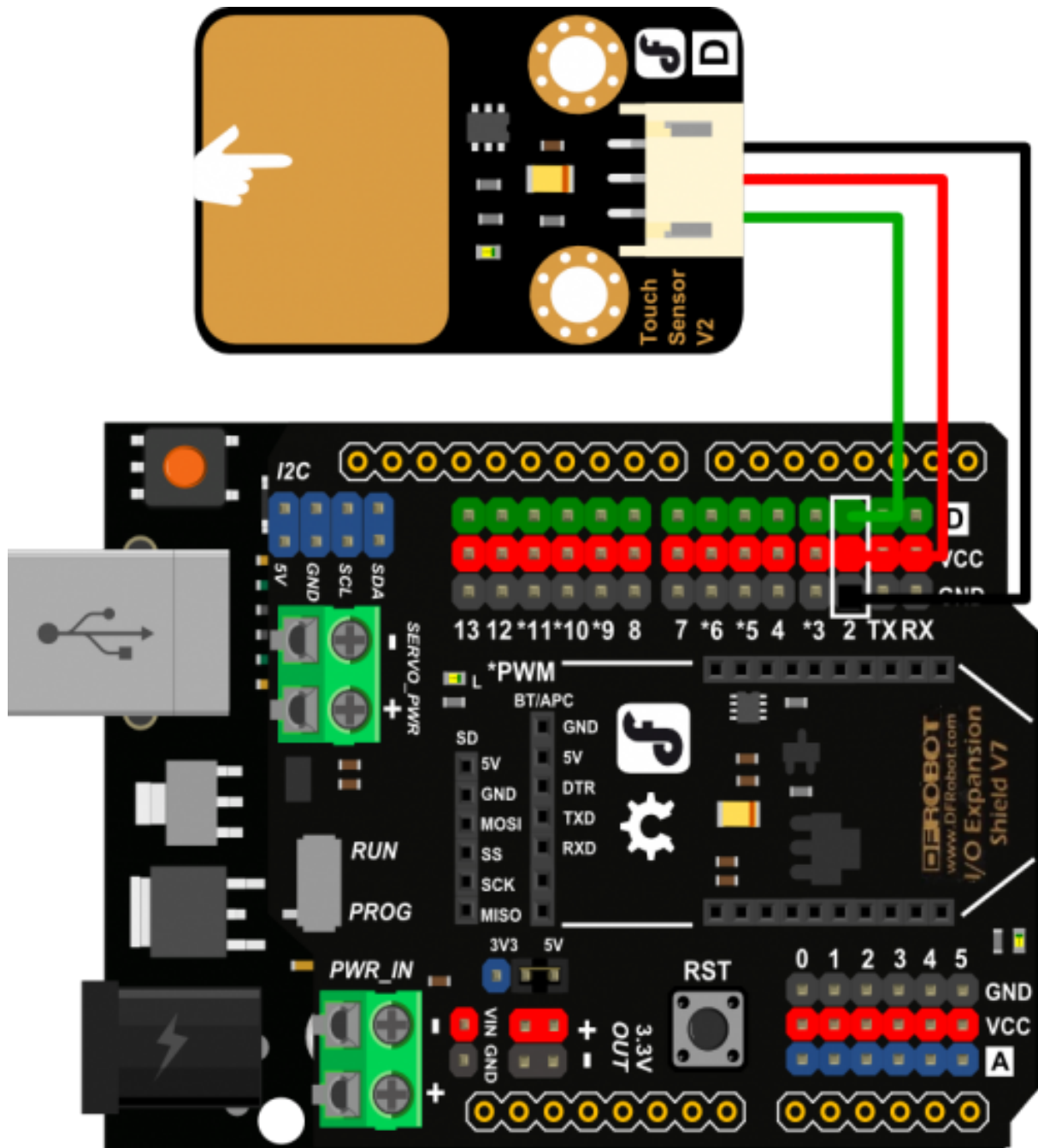
- Wide voltage range from 3.3V to 5V
- Standard assembling structure (two 3mm holes with multiple of 5cm as interval)
- Icons to simply illustrate sensor function
- High quality connector
- Immersion gold surface

Specification

- Supply Voltage: 3.3V to 5V
- Interface: Digital
- Size:22x30mm

Tutorial

Connection Diagram



connection diagram

Sample Code

```
int ledPin = 13;           // Connect LED on pin 13, or use the onboard one
int KEY = 2;              // Connect Touch sensor on Digital Pin 2

void setup(){
  pinMode(ledPin, OUTPUT); // Set ledPin to output mode
}
```

```
pinMode(KEY, INPUT); //Set touch sensor pin to input mode
}

void loop(){
  if(digitalRead(KEY)==HIGH) { //Read Touch sensor signal
    digitalWrite(ledPin, HIGH); // if Touch sensor is HIGH, then turn on
  }
  else{
    digitalWrite(ledPin, LOW); // if Touch sensor is LOW, then turn off the led
  }
}
```

Result

After the uploader , if use finger or metal object touch the metal surface of the transducer , the red LED lights on the UNO will light.

Trouble shooting

More question and cool idea, visit [DFRobot Forum](#)

More

Version History

- [DFRobot Capacitive Touch Sensor\(SKU:DFR0030\)](#)