

7 REASONS TO CHOOSE US

Internet-POE



T-Internet-POE



Type C



ESP32-WROOM-32E



Support TF Card



PA2369NL



RST+BOOT



Download Board



PRODUCT INTRODUCTION

Internet-POE

Equipped with HR861153C Internet Module and LAN8720A network chip, And it supports Internet-POE interface power supply function.

Equipped with PA2369NL

ESP32-WROOM-32E

ESP32-WROOM-32E modules are based on the ESP32-D0WD-V3 dual-core chip design, suitable for application scenarios based on Wi-Fi and Bluetooth connections, and have powerful dual-core performance, and onboard 4MB Flash.



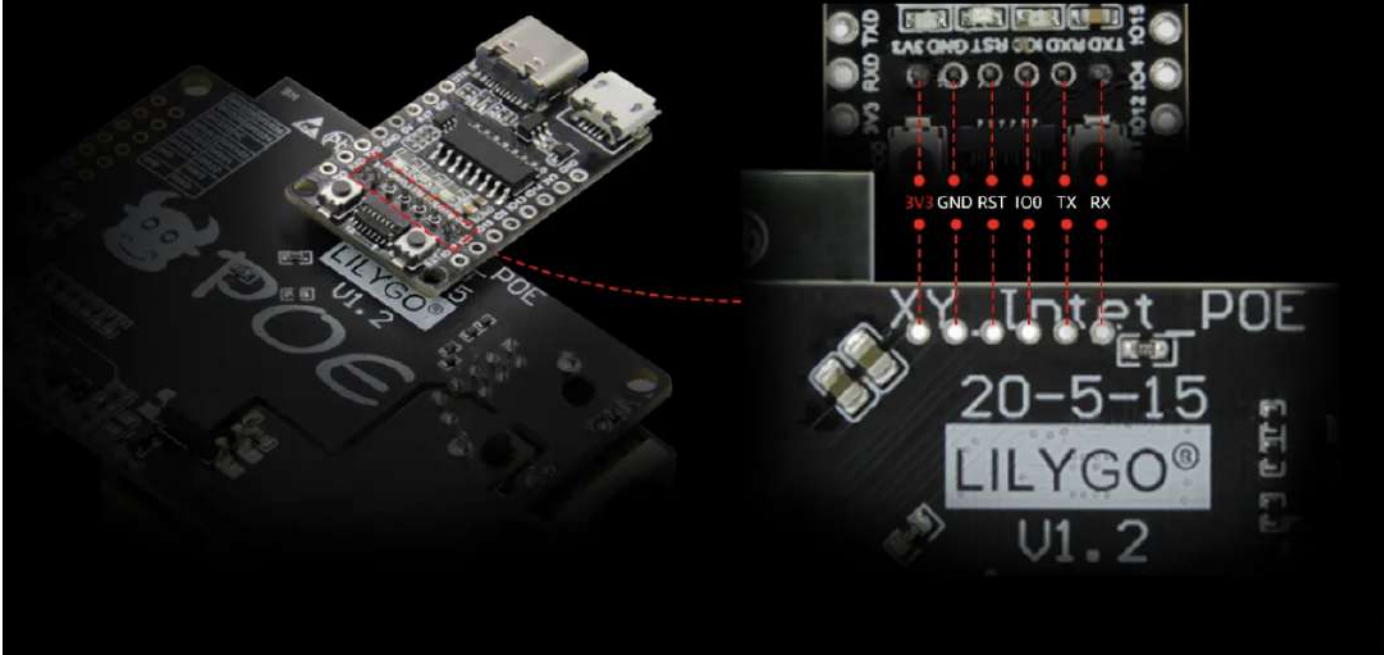


TF Card Holder

Note: If there is a card in the slot then you can't upload your firmware via the serial Downloader Expander board.

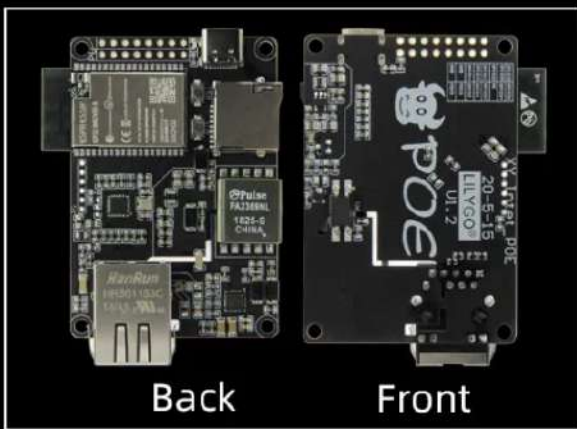
Downloader Board

Downloader Board Provide more GPIO pins.



If you want to use the download board, you must link the back of the download board to the back of the T-Internet-POE, not the front.

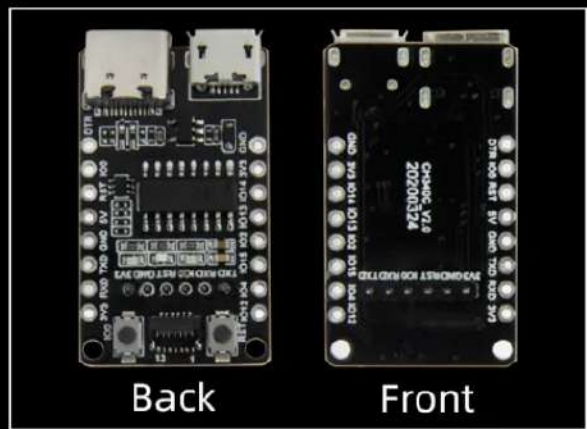
Note: Can be soldered or not.



Back

Front

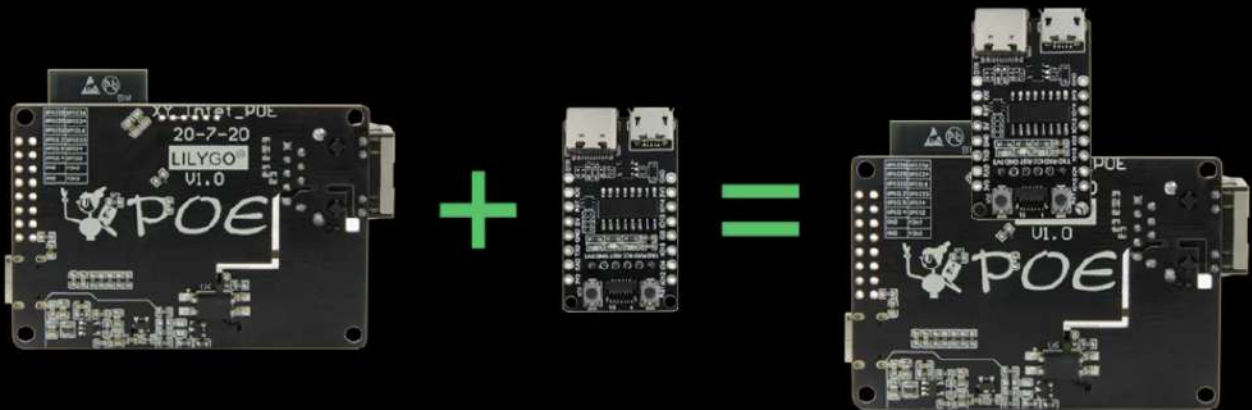
T-Internet-POE



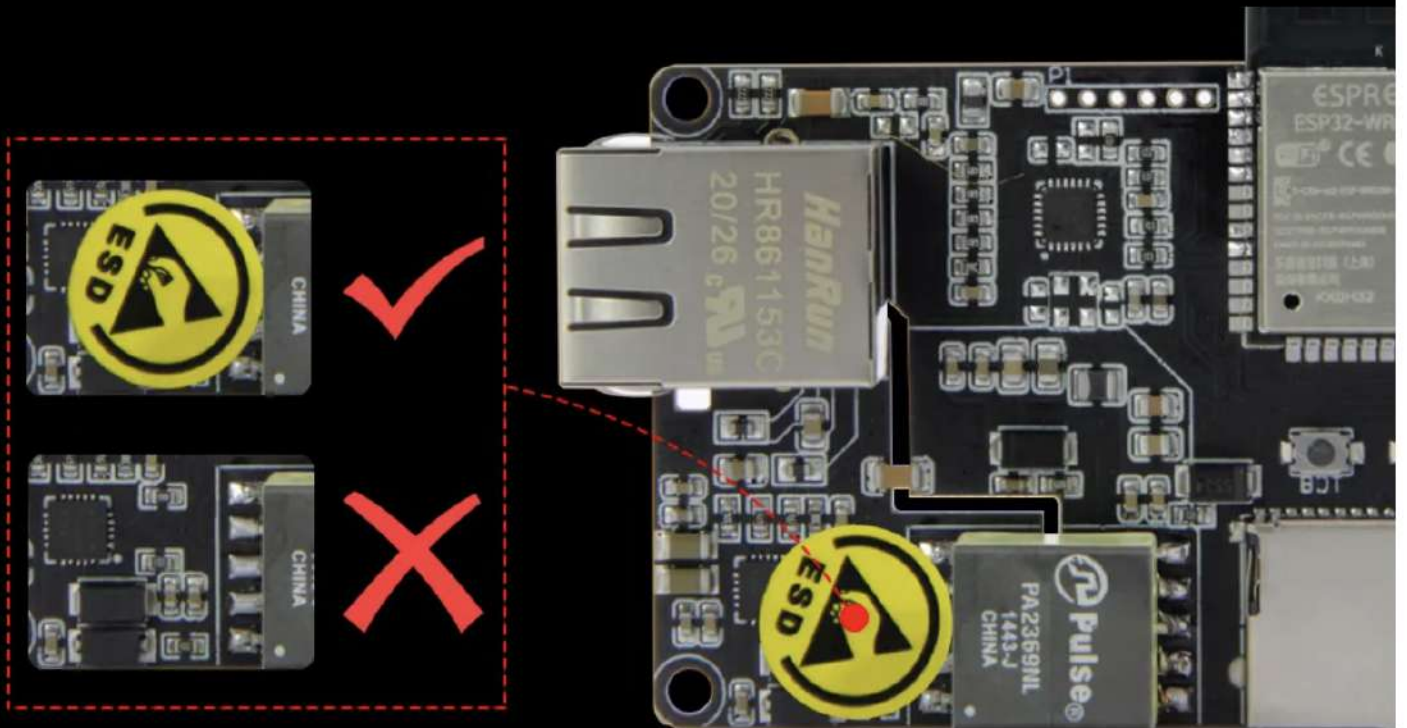
Back

Front

Downloader Board



REMINDER



Do not remove the yellow reminder sticker !!!

Q: Why can't you tear off the yellow reminder sticker?

A: Because the sticker is to protect the chip under it.

Q: What will be the consequences of touching the chip under the sticker when it is powered on?

A: Touching the chip directly will generate static electricity, which might easily cause the chip breakdown.

EXAMPLES AND PIN DIAGRAMS


Xinyuan-LilyGO /
LilyGO-T-ETH-POE

lewisxhe Update README

- examples
- image
- schematic
- shell
- .gitignore
- README.MD
- platformio.ini

Example
Github

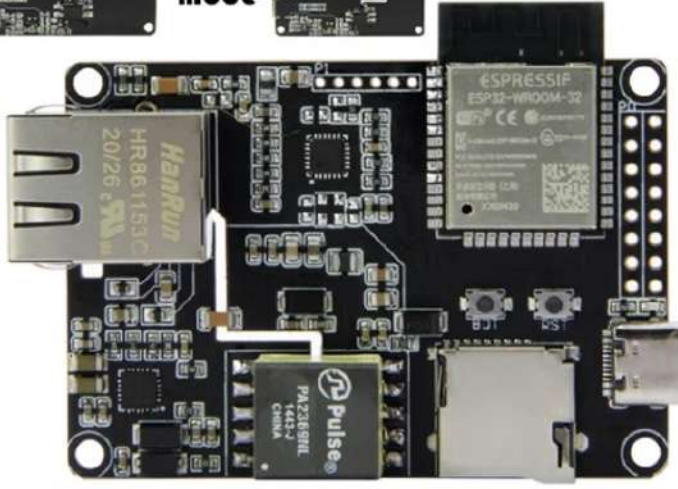
CLICK TO VIEW 



flash
+
mode =

I036	I039
I034	I035
I016	I032
I033	I012
I004	I015
I002	I014
3V3	GND
3V3	GND

Type-C USB



**Internet Module
HR861153C**

**XY_Internet_POE V1.0
ESP32 PINMAP**

RXD0	I025
RXD1	I026
CRCDV	I027
MDC	I023
TXD1	I022
TX_EN	I021
TXD0	I019
MIDI0	I018

MOSI	I012
SCLK	I015
CS	I013
MISO	I002

DETAILED PARAMETERS

CPU ESP32-WROOM-32E Module

- ESP32-D0WD-V3 embedded, Xtensa dual-core 32-bit LX6 microprocessor
- 4 MB SPI flash
- WiFi 802.11b/g/n
- Bluetooth V4.2 BR/EDR and Bluetooth LE
- On-board PCB antenna
- 40 MHz crystal oscillator

Download board (T-Internet-POE does not include)

- USB to TTL Chip: CH340C

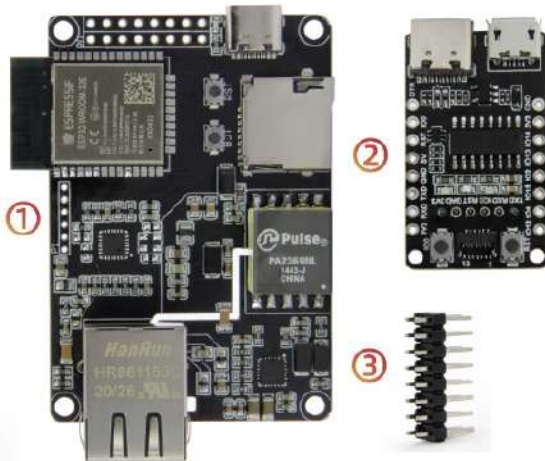
Ethernet Network Port

- HR861153C Ethernet Network Port
- AN8720 Ethernet Network Port: Single-Chip Ethernet Physical Layer Transceiver Flexible Power Management Architecture
- Si3404 POE PD Voltage input range: 2.7V ~ 10.1V

T-Internet-POE On-board

- TF Card Holder
- 2 Buttons: RST+BOOT
- USB: Type-C (Charging only, Data transfer requires a download board)
- PA2369NL Transformer

What's in the box

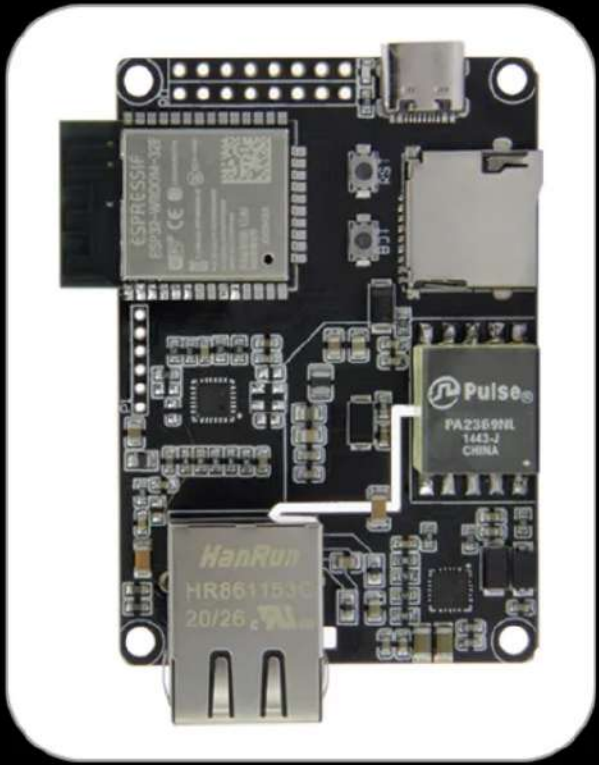


T-Internet-POE Suit

- 1 X T-Internet-POE
- 1 X Downloader board (**Only T-Internet-POE Suit contains**)
- 1 X Double Row Pin

Downloader Board can be purchased separately

- <https://www.aliexpress.com/item/1005003639760629.html>



CHECK THE DETAILS

