

## 3.2 TFT STM32F407VET6 Black

Özellik

STM32F407VET6 çip ana parametreleri:

Çekirdek: Cortex-M4 32-bit RISC;

Özellikler: tek döngüsü DSP talimatları

Çalışma frekansı: 168MHz

210DMIPS / 1025 DMIPS / MHZ

Çalışma gerilimi: 1.8-3.6V

Paket: LQFP144

Depolama kaynakları: 512kB Flash/192 + 4kb SRAM

Kaynaklar:

3 X SPI, 3 X USART

2 X UART

2 X I2S, 3 X I2C

1 X FSMC, 1 X SDIO, 2 X CAN

1 X USB 2.0 FS / HS denetleyicisi (özel DMA ile)

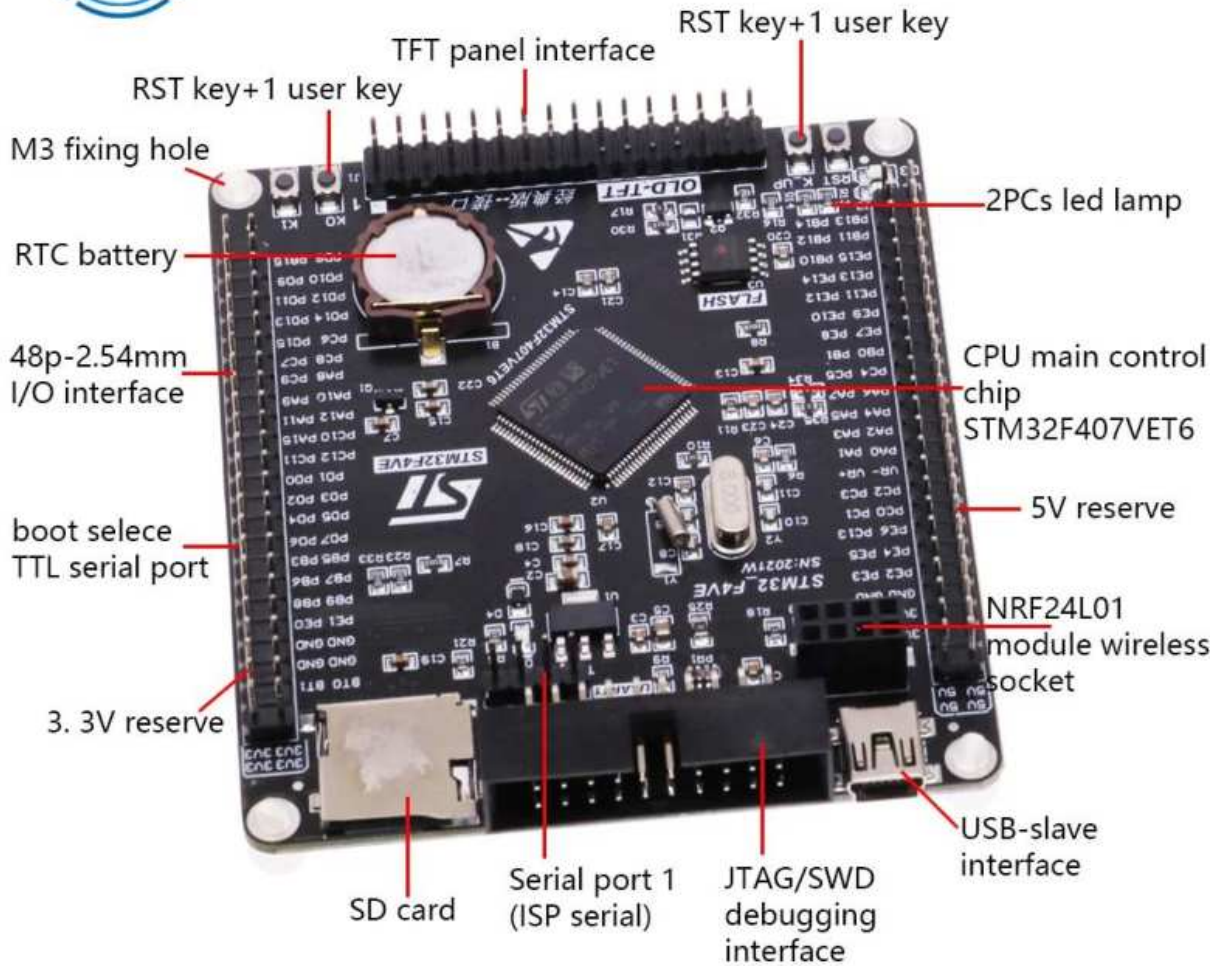
1 X USB HS ULPI (harici USB HS PHY için)

MAC için 1X10/100 Ethernet

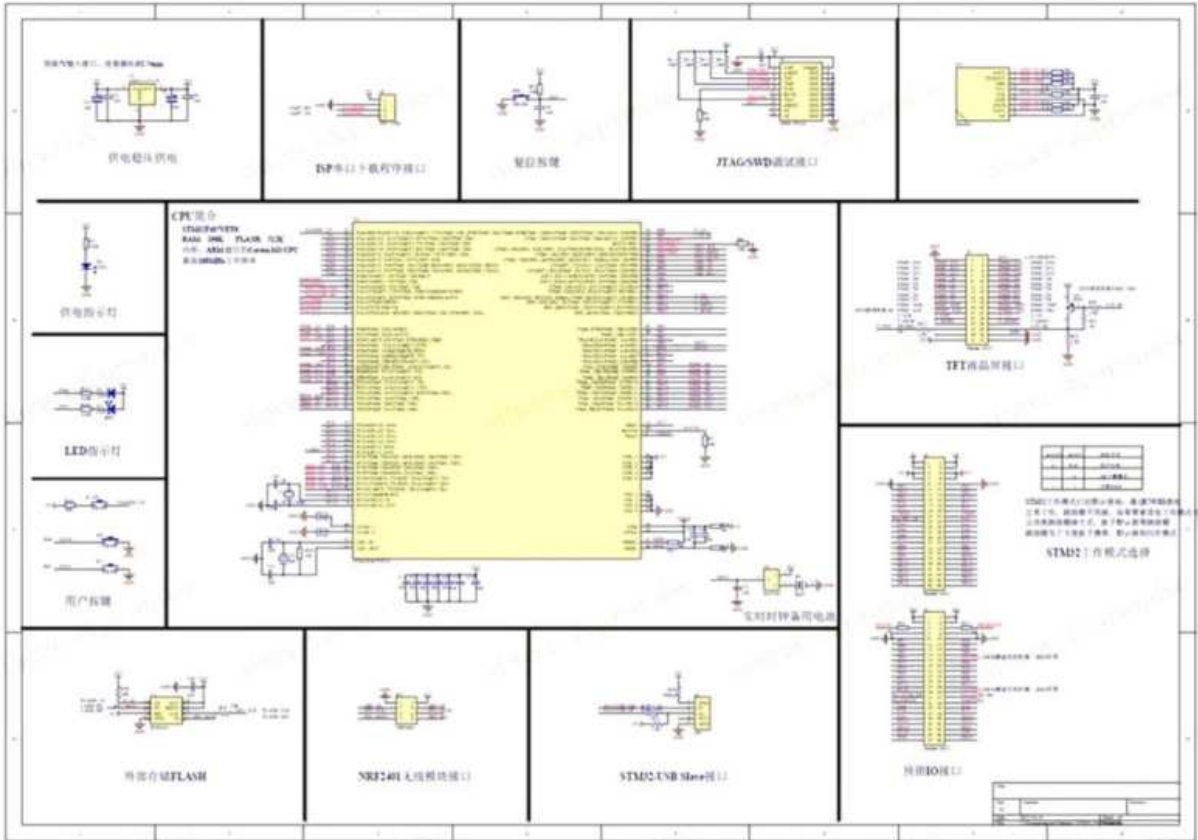
1X8 ila 12 bit paralel kamera arayüzü

3 X AD (12 Wei, 1us, paylaşım 24), 2 X DA (12-bit)

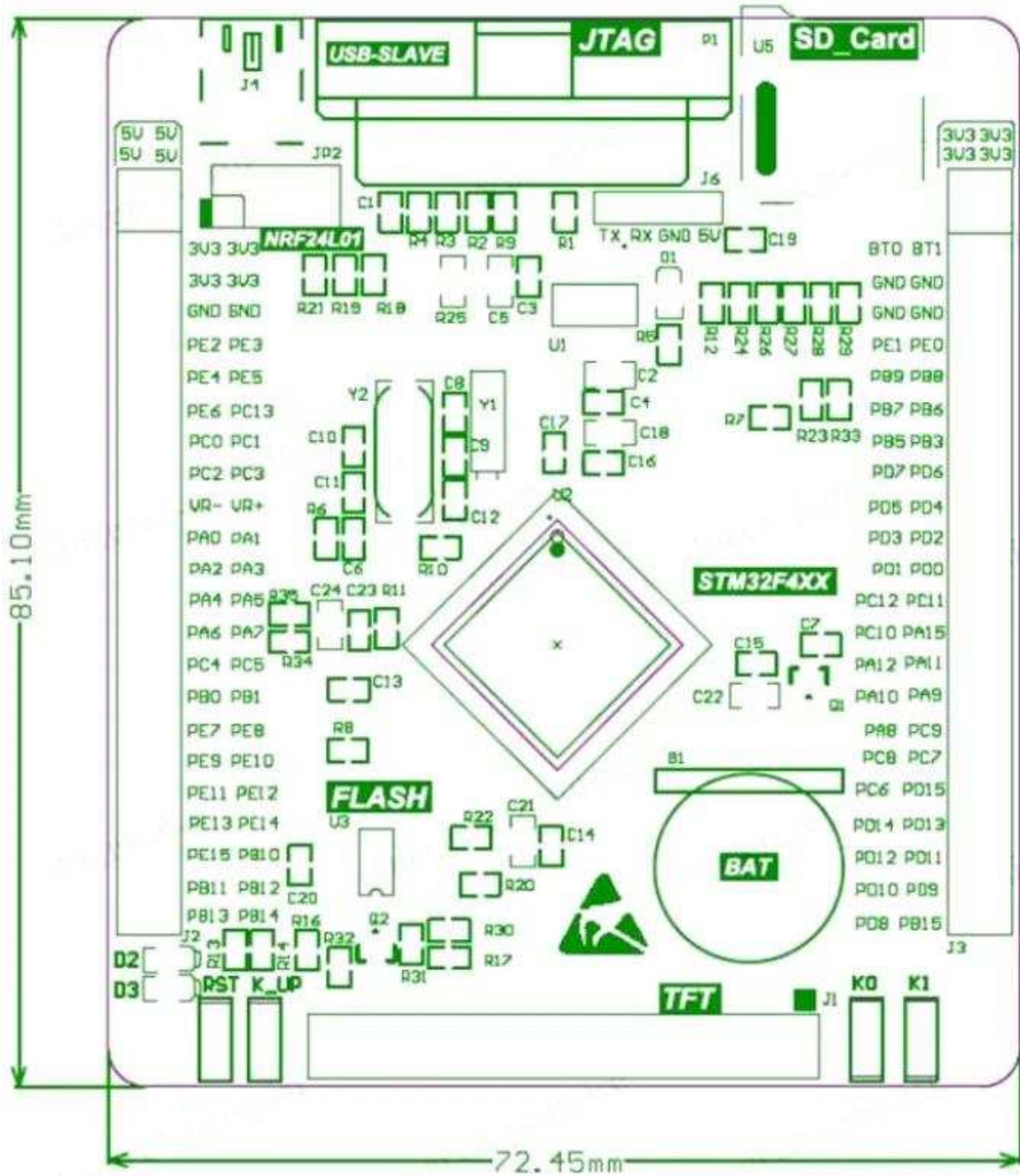
# DIY-Victor



Boyutlar



Şematik diyagramı





## "Black" STM32F4VET6 Board Pinouts

Ver 3.0 – 14 May 2017 - RP

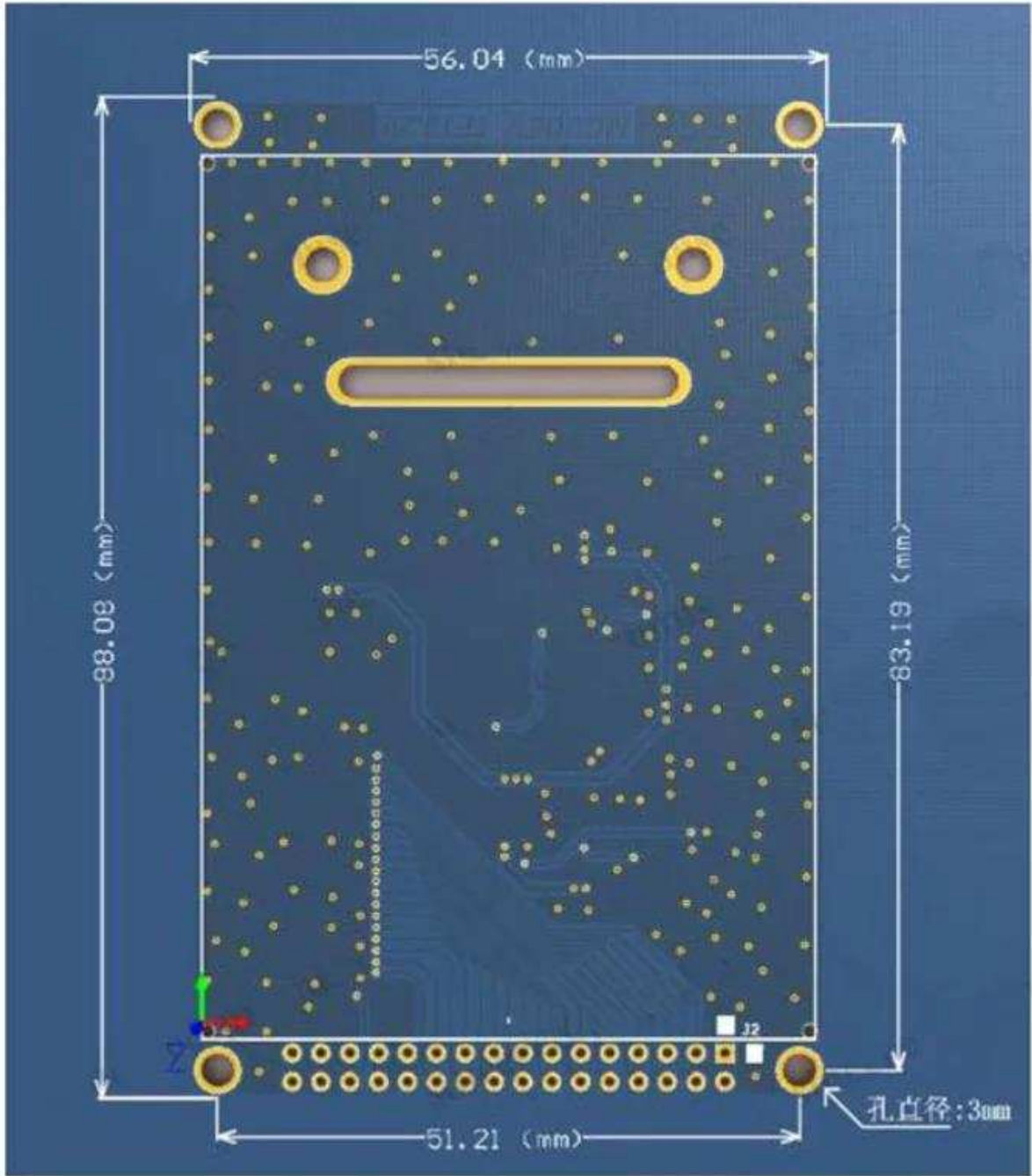
Outside - Row "U" - LEFT J2 Connector (USB side) - Row "V" – Inside

Special + USB	I2C	SPI	Serial	Analog	Timer/PWM	Defined Fn / Special	Arduino Pin	Port	5v Tolerant	Header Row	5v Tolerant	Port	Arduino Pin	Defined Fn / Special	Timer/PWM	Analog	Serial	SPI	I2C	Special + USB	
							5V		1			5V									
							5V		2			5V									
							3.3v		3			3.3v									
							3.3v		4			3.3v									
							GND		5			GND									
							64	PE2	0	6	0	PE3	65								
							66	PE4	0	7	0	PE5	67	9.1							
						9.2	68	PE6	0	8	0	PC13	45								
				A10			32	PC0	0	9	0	PC1	33			A11					
MISO2		A12					34	PC2	0	10	0	PC3	35			A13	MOSI2				
								VR-		11		VR+									
			TX4	A0	5.1		0	PA0	0	12	0	PA1	1	2.2	A1	RX4					
			TX2	A2	2.3		2	PA2	0	13	0	PA3	3	9.2, 2.4	A3	RX2					
			NSS1	A4, O1			4	PA4	0	14	0	PA5	5	2.1	A5, O2	SCK1					
	MISO1			A6	3.1, 3.1, 1.8	LED1	6	PA6	0	15	0	PA7	7	LED2	8.1N, 3.2	A7	MOSI1				
				A14			36	PC4	0	16	0	PC5	37			A15					
F_CS				A8	3.8, 8.2		16	PB0	0	17	0	PB1	17	3.4, 8.1N	A9						
					1.ET		69	PE7	0	18	0	PE8	70	1.1N							
					1.1		71	PE9	0	19	0	PE10	72	1.2N							
					1.2		73	PE11	0	20	0	PE12	74	1.3N							
					1.3		75	PE13	0	21	0	PE14	76	1.4							
					1.8K		77	PE15	0	22	0	PB10	26	2.3							
		SDA2	RX3		2.4		27	PB11	0	23	0	PB12	28	1.8K							
IS_VBUS		SCK2	CTS	3	1.1N		29	PB13	0	24	0	PB14	30	SPI3_CS	FLASH	1.2N, 12.1					

Belirli parametreler aşağıdaki gibidir:

1. LCD panel: gerçek renkli TFT
2. Sürücü Ic: ILI9341
3. PIN ayak: 32Pin (FSMC otobüs)
4. Çözünürlük: 320x240
5. Bağlantı: kadın tek sıra
6. PIN ayak aralığı: 2.54MM

Boyut



Pin arayüz tanımı

