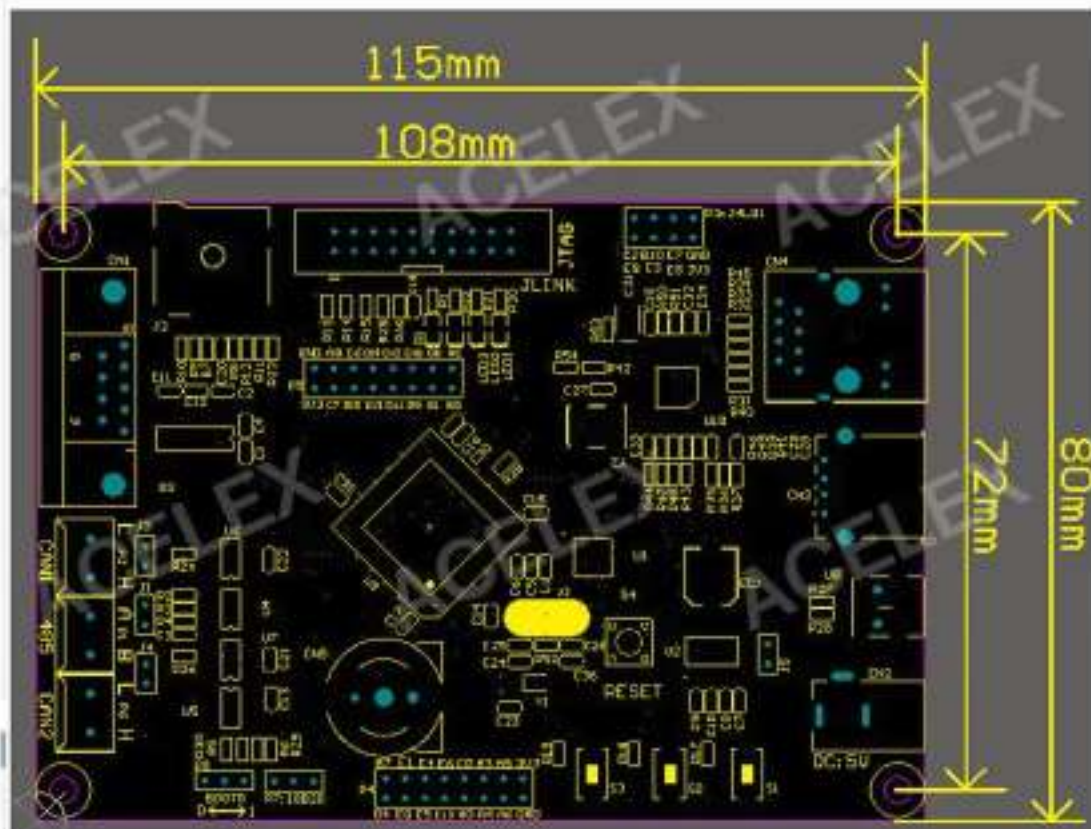


Product description

The development board uses the STM32F407VET6 chip as the main controller, M4 super core, expansion with 1 RS232 interface, 1 RS485 interface, 2 CAN interfaces, 1 Ethernet interface, 1 USB HOST interface, 1 USB DEVICE interface, Three user buttons, three user indicators. Very suitable for IoT application development, gateway server development, bus communication development and industrial control.





Product description

Master MCU	STM32F407VET6 -LQFP100
Ethernet chip	DP83848-LQFP48
Serial port	1 RS232 interface with serial port 1 PA9 PA10
RS485 interface	1 RS485 interface with serial port 2 PD5 PD6
CAN interface	2 CAN interfaces with chip PD0 PD1/ PB5 PB6
TF card	9-pin small card, controlled by the PC and PD pins
Wireless interface	P3 leads to NRF24L01 interface
USB interface	One master USB and one slave USB
storage	Built-in 24C02 and 25Q64 memory chips
Temperature Sensor interface	Lead out DS18B20 sensor interface
JTAG interface	JTAG corresponding to J-LINK
button	K1, K2, K3 three user buttons
Indicator light	LED1, LED2, LED3 three user indicators



