

# Update Log

Difference	DeautherMiNi	DeautherMiNiV3
ESP07	4MB	4MB
PowerSwitch	NO	YES
RTC	NO	DS3231
USB	Micro USB	USB-C

## What is it?

Deauther MiNi is still an ESP8266 development board, it comes installed with the latest ESP8266 Deauther software. With this software, you can perform different attacks to test WiFi networks. Please note that the ESP8266 does only support 2.4GHz. You can also use it to develop your own software. It is simple to use, just like any other ESP8266 development board.

## Why did you make it?

I designed this development board especially for Spacehuhn's great project: [ESP8266 Deauther](#). It has been authorized by him and is officially supported.

Thanks to every customer that leaves feedback! I will keep improving this board.

## Function

- Deauther Attack: Disconnect 2.4G WiFi
- Deauther Beacon: Create fake networks
- Deauther Probe: Confuse wifi trackers
- Packet Monitor: Display wifi traffic

## GPIOs and hardware info:

- Display: SH1106 1.3" OLED
- Display SDA: GPIO 5
- Display SCL/SCK: GPIO 4
- WS2812b LED: GPIO 15
- Button Up: GPIO 12
- Button Down: GPIO 13
- Button Select: GPIO 14
- High Light LED: GPIO16
- All ESP8266 pins break out.

## What makes it special?

- Only ~80mA power usage
- TP4056x power solution
- Included 5dB antenna
- All GPIO breakouts and 3.3 and 5V output
- 2 LEDs to indicate battery charging status (Red:Charging, Green:Full)

## Why did you make it?

I designed this development board especially for Spacehuhn's great project: [ESP8266 Deauther](#). It has been authorized by him and is officially supported.

Thanks to every customer that leaves feedback! I will keep improving this board.

## Disclaimer

This project is a proof of concept for testing and educational purposes. Neither the ESP8266, nor its SDK was meant or built for such purposes. Bugs can occur!

Use it only against your own networks and devices! Please check the legal regulations in your country before using it. We don't take any responsibility for what you do with this program.

## More Info

### Deauth

Closes the connection of WiFi devices by sending deauthentication frames to access points and client devices you selected. This is only possible because a lot of devices don't use the 802.11w-2009 standard that offers a protection against this attack. Please only select one target! When you select multiple targets that run on different channels and start the attack, it will quickly switch between those channels and you have no chance to reconnect to the access point that hosts this web interface.

### Beacon

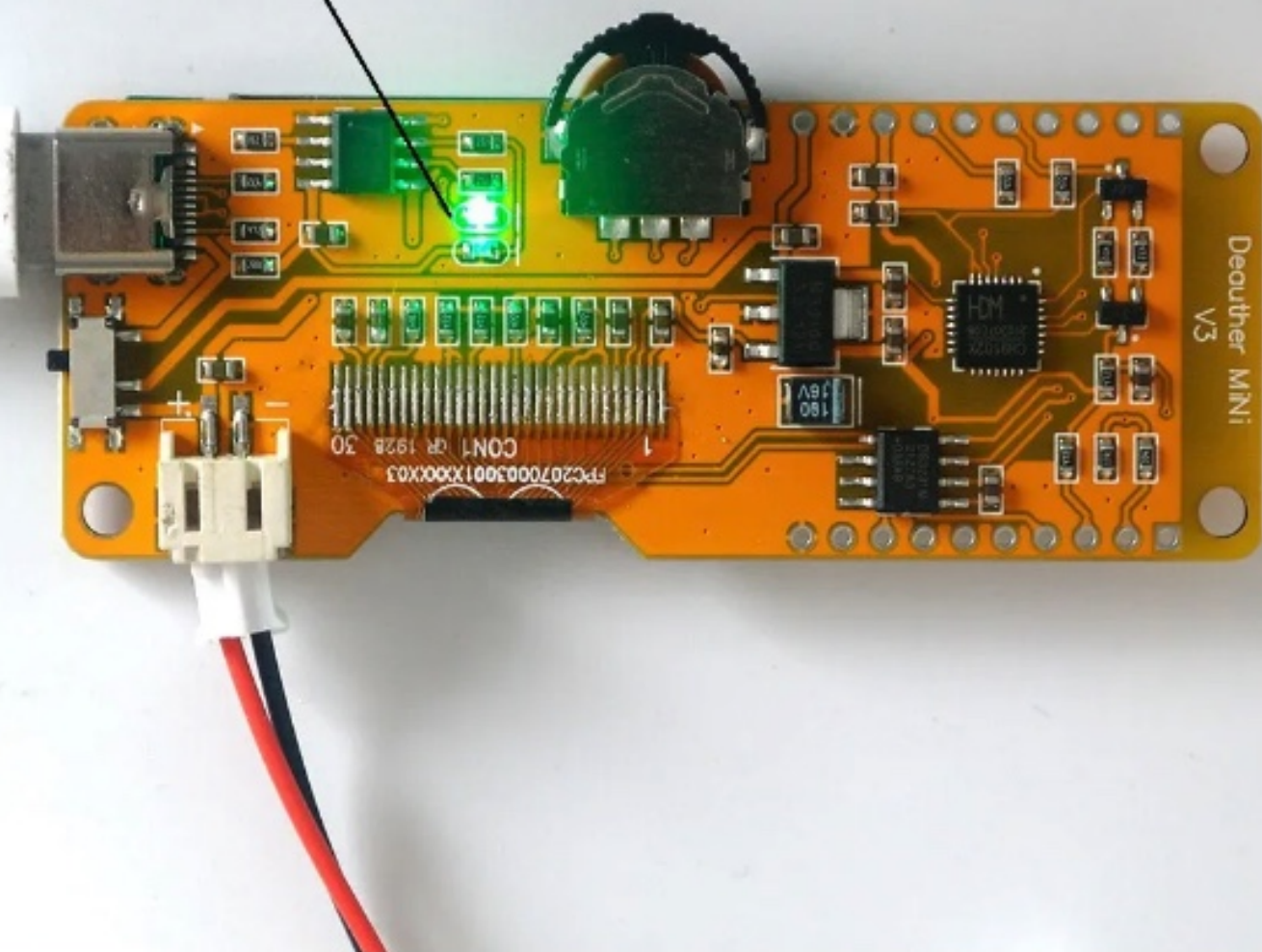
Beacon packets are used to advertise access points. By continuously sending beacon packets out, it will look like you created new WiFi networks. You can specify the network names under SSIDs.

### Probe

Probe requests are sent by client devices to ask if a known network is nearby. Use this attack to confuse WiFi trackers by asking for networks that you specified in the SSID list. It's unlikely you will see any impact by this attack with your home network.

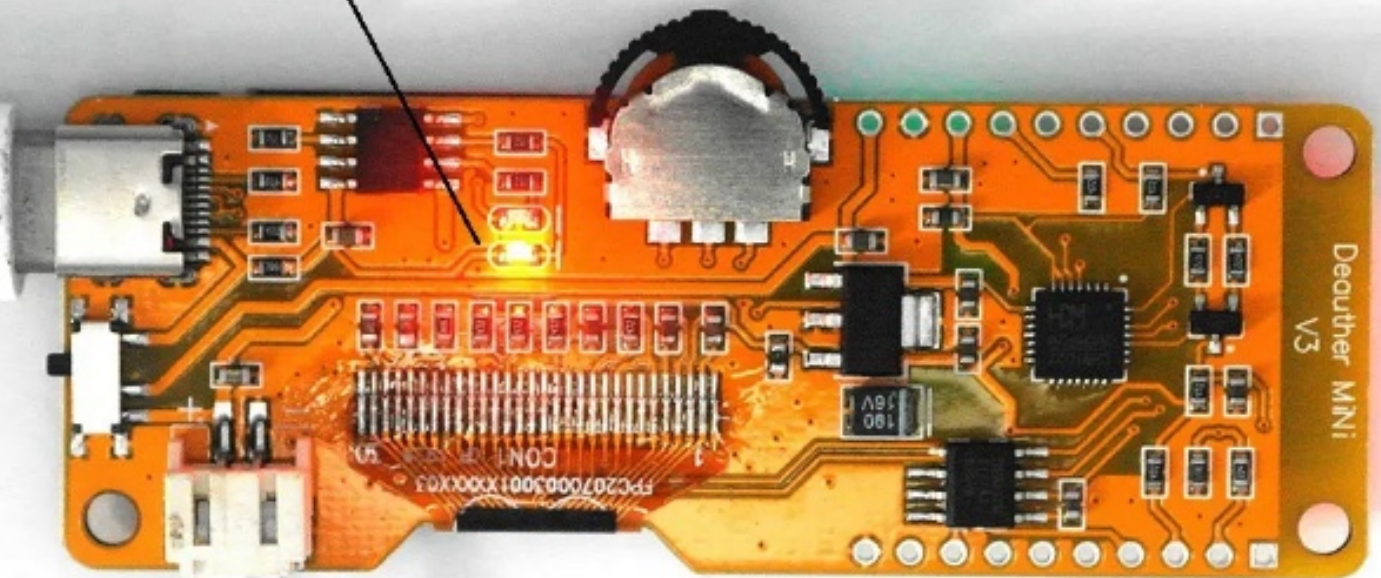
This product does not include battery.

Green: Full

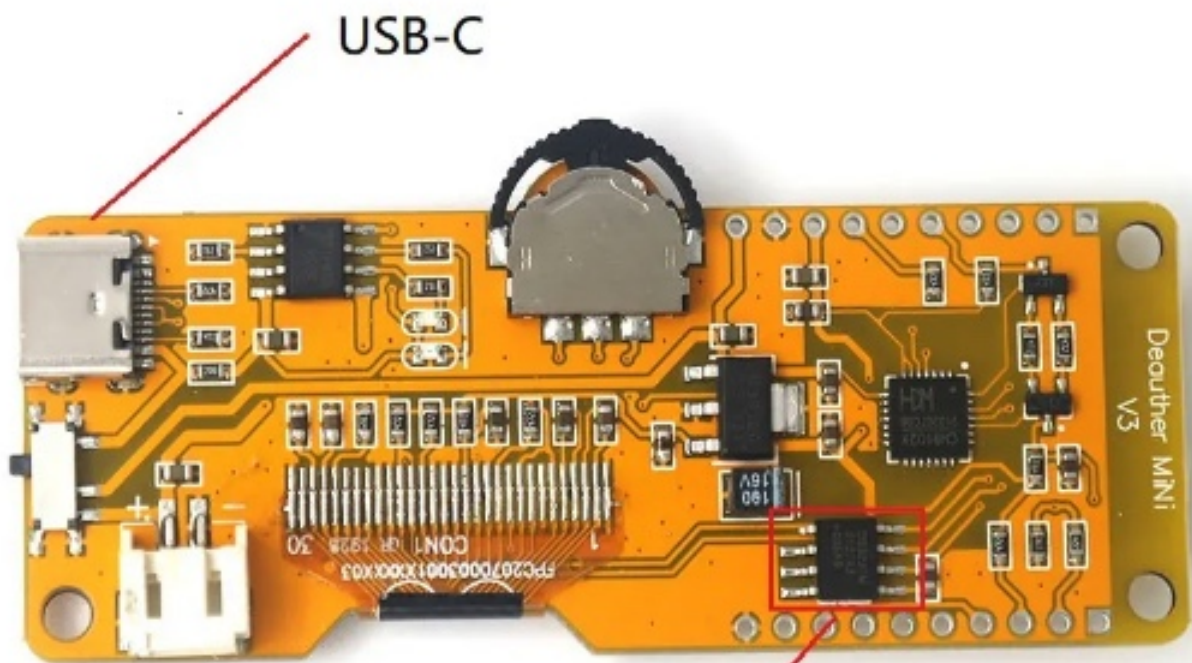


This product does not include battery.

Red: Charging



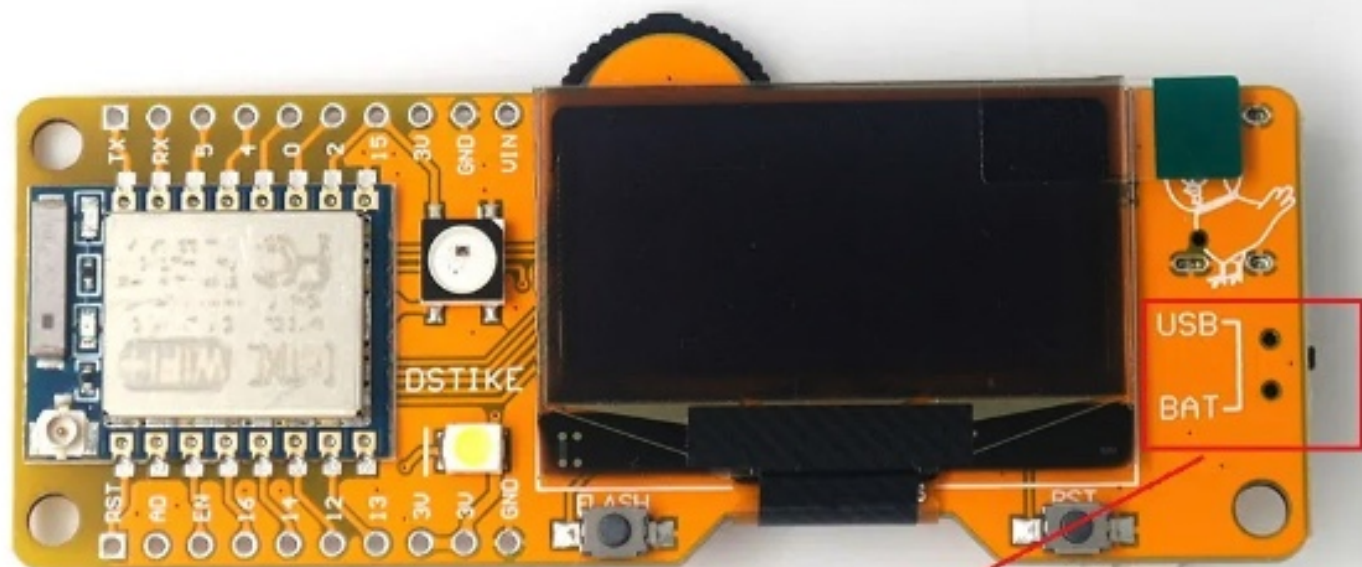




USB-C

Deauther MINI  
V3

RTC: DS3231



Switch:

USB: Power from USB/Programming/Charging

BAT: Power from 3.7V Battery

